

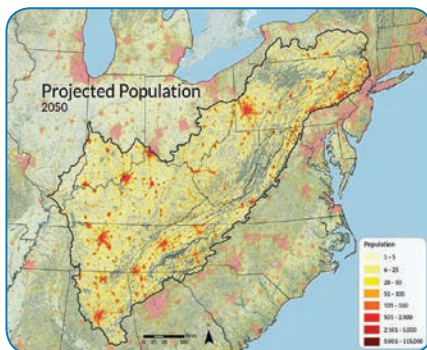
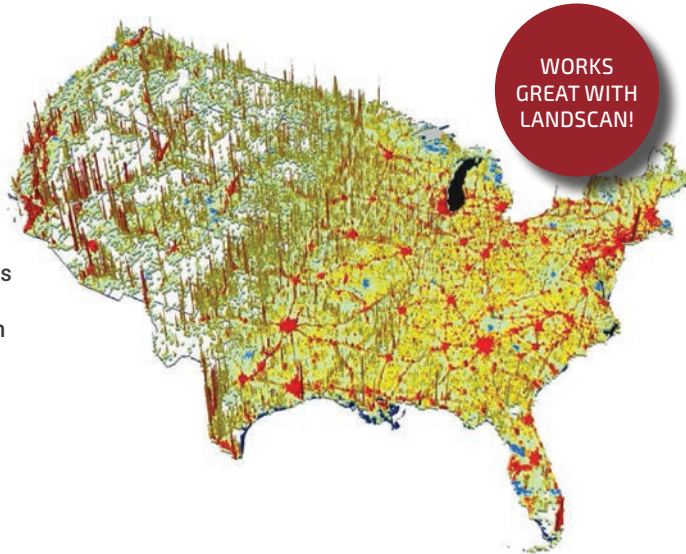
AVAILABLE NOW FROM THE PRODUCERS OF LANDSCAN™

# LANDCAST 2030 AND 2050

## POPULATION PROJECTIONS FOR THE UNITED STATES

From the producers of LandScan, LandCast presents spatially explicit population projections for the contiguous United States for 2030 and 2050.

This locally adaptive model projects an ambient population distribution at an approximately 1km resolution for each target year based on a business as usual scenario.



Developed by the Oak Ridge National Laboratory (ORNL), LandCast 2030 and 2050 Population Projections model future national-level human population densities. LandCast builds on the intelligent dasymetric modeling techniques used by LandScan Global and LandScan USA to down-scale national level population projections and model spatial population growth at the local level.

The LandCast models estimate the probability of a population being at a particular location, which measures where people will likely be in the future, not necessarily their places of residence. The LandCast data sets are an

empirically-informed spatial distribution of projected population of the contiguous U.S. for 2030 and 2050 compiled on a 30" x 30" latitude/longitude grid. Projected census counts were apportioned to each grid cell based on locally adaptive likelihood coefficients, which are based on land cover, slope, road proximity, distances to larger cities, a moving average of current population, and other data sets.

**CONTACT [LANDSCAN@EASTVIEW.COM](mailto:LANDSCAN@EASTVIEW.COM) FOR MORE INFORMATION OR TO PLACE AN ORDER**



(952) 252-1205 | [GEO.SPATIAL.COM](http://GEO.SPATIAL.COM) | [LANDSCAN@EASTVIEW.COM](mailto:LANDSCAN@EASTVIEW.COM)